

C4 Motor Circuit Breakers



Technical Datasheet

Key Features

- Motor protection rating up to 100Amps
- Short circuit breaking capacity up to 100kA
- Phase failure protection
- DIN rail mounting
- Wide range of accessories



Options & Ordering Codes

C4/32T					
Rated Current In	Suitable for Motors ¹⁾ 3–400V	Setting Range	Short Circuit Release	Short Circuit Breaking Capacity at 3–400V	Part Number
A	kW	A	A	kA (Icu)	
0.16	-	0.10 - 0.16	2.1	100	C4/32T-0.16
0.25	0.06	0.16 - 0.25	3.3	100	C4/32T-0.25
0.4	0.09	0.25 - 0.40	5.2	100	C4/32T-0.4
0.63	0.18	0.40 - 0.63	8.2	100	C4/32T-0.63
1	0.25	0.63 - 1.00	13	100	C4/32T-1
1.6	0.55	1.00 - 1.60	20.8	100	C4/32T-1.6
2.5	0.75	1.60 - 2.50	32.5	100	C4/32T-2.5
4	1.5	2.50 - 4.00	52	100	C4/32T-4
6	2.2	4.00 - 6.00	78	100	C4/32T-6
8	3	5.00 - 8.00	104	100	C4/32T-8
10	4	6.00 - 10.00	130	50	C4/32T-10
13	5.5	9.00 - 13.00	169	50	C4/32T-13
17	7.5	11.00 - 17.00	221	20	C4/32T-17
22	7.5	14.00 - 22.00	286	15	C4/32T-22
26	11	18.00 - 26.00	338	15	C4/32T-26
32	15	22.00 - 32.00	416	15	C4/32T-32
40	18.5	28.00 - 40.00	520	10	C4/32T-40

C4/32R					
Rated Current In	Suitable for Motors ¹⁾ 3–400V	Setting Range	Short Circuit Release	Short Circuit Breaking Capacity at 3–400V	Part Number
A	kW	A	A	kA (Icu)	
0.16	-	0.10 - 0.16	2.1	100	C4/32R-0.16
0.25	0.06	0.16 - 0.25	3.3	100	C4/32R-0.25
0.4	0.09	0.25 - 0.40	5.2	100	C4/32R-0.4
0.63	0.18	0.40 - 0.63	8.2	100	C4/32R-0.63
1	0.25	0.63 - 1.00	13	100	C4/32R-1
1.6	0.55	1.00 - 1.60	20.8	100	C4/32R-1.6
2.5	0.75	1.60 - 2.50	32.5	100	C4/32R-2.5
4	1.5	2.50 - 4.00	52	100	C4/32R-4
6	2.2	4.00 - 6.00	78	100	C4/32R-6
8	3	5.00 - 8.00	104	100	C4/32R-8
10	4	6.00 - 10.00	130	100	C4/32R-10
13	5.5	9.00 - 13.00	169	100	C4/32R-13
17	7.5	11.00 - 17.00	221	50	C4/32R-17
22	7.5	14.00 - 22.00	286	50	C4/32R-22
26	11	18.00 - 26.00	338	50	C4/32R-26
32	15	22.00 - 32.00	416	50	C4/32R-32
40	18.5	28.00 - 40.00	520	40	C4/32R-40

C4/63R					
Rated Current In	Suitable for Motors ¹⁾ 3–400V	Setting Range	Short Circuit Release	Short Circuit Breaking Capacity at 3–400V	Part Number
A	kW	A	A	kA (Icu)	
26	12.5	18.00 - 26.00	338	50	C4/63R-26
32	15	22.00 - 32.00	416	50	C4/63R-32
40	18.5	28.00 - 40.00	520	50	C4/63R-40
50	22	34.00 - 50.00	650	50	C4/63R-50
63	30	45.00 - 63.00	819	50	C4/63R-63

C4/100R					
Rated Current In	Suitable for Motors ¹⁾ 3–400V	Setting Range	Short Circuit Release	Short Circuit Breaking Capacity at 3–400V	Part Number
A	kW	A	A	kA (Icu)	
63	30	45.00 - 63.00	819	50	C4/100R-63
75	37	55.00 - 75.00	975	50	C4/100R-75
90	45	70.00 - 90.00	1170	50	C4/100R-90
100	-	80.00 - 100.00	1300	50	C4/100R-100

¹⁾ Approximate values of standard motors

C4 Motor Circuit Breakers



Technical Data according to IEC/EN 60947-1, 60947-2, 60947-4-1 and VDE 0660

Technical Datasheet

This table shows the rated ultimate short-circuit breaking capacity I_{cu} and the rated service short-circuit breaking capacity I_{cs} of the C4 circuit-breakers with different operational voltages as a function of the rated current I_n of the circuit-breakers.

The circuit-breakers can be fed at the top or bottom supply terminals without any reduction of the rated data. If the short-circuit current exceeds the rated short-circuit breaking capacity of the circuit-breaker specified in the tables at the installation point, a backup fuse is to be used. The maximum rated current for the backup fuse is specified in the tables. These fuses are only suitable for the short-circuit-currents as indicated on the fuses.

Type	Rated Current I_n	up to AC 240V ²⁾			up to AC 400V ²⁾			up to AC 440V ²⁾			up to AC 500V ²⁾			up to AC 690V ²⁾		
		I_{cu}	I_{cs}	max fuse ¹⁾ gI/gG	I_{cu}	I_{cs}	max fuse ¹⁾ gI/gG	I_{cu}	I_{cs}	max fuse ¹⁾ gI/gG	I_{cu}	I_{cs}	max fuse ¹⁾ gI/gG	I_{cu}	I_{cs}	max fuse ¹⁾ gI/gG
		A	kA	A	kA	kA	A	kA	kA	A	kA	kA	A	kA	kA	A
C4/32T	0.16	100	100	-	100	100	-	100	100	-	100	100	-	100	100	-
	0.25	100	100	-	100	100	-	100	100	-	100	100	-	100	100	-
	0.4	100	100	-	100	100	-	100	100	-	100	100	-	100	100	-
	0.63	100	100	-	100	100	-	100	100	-	100	100	-	100	100	-
	1	100	100	-	100	100	-	100	100	-	100	100	-	100	100	-
	1.6	100	100	-	100	100	-	100	100	-	100	100	-	3	3	20
	2.5	100	100	-	100	100	-	100	100	-	50	38	50	3	3	35
	4	100	100	-	100	100	-	50	38	50	15	11	40	3	3	40
	6	100	100	-	100	100	-	15	11	50	10	8	50	3	3	50
	8	100	100	-	100	100	-	15	11	63	10	8	63	3	3	63
	10	100	100	-	50	38	80	15	11	63	6	5	63	3	3	63
	13	100	100	-	50	38	80	10	8	80	6	5	80	3	3	63
	17	50	38	-	20	15	100	10	8	80	6	5	80	3	3	63
	22	40	30	125	15	11	100	8	6	100	6	5	80	3	3	63
	26	40	30	125	15	11	100	8	6	100	6	5	80	3	3	63
32	30	22	125	15	11	100	6	4	100	5	4	80	3	3	63	
40	20	15	160	10	8	125	5	3	100	4	3	80	2	2	63	
C4/32R	0.16	100	100	-												
	0.25	100	100	-	100	100	-	100	100	-	100	100	-	100	100	-
	0.4	100	100	-	100	100	-	100	100	-	100	100	-	100	100	-
	0.63	100	100	-	100	100	-	100	100	-	100	100	-	100	100	-
	1	100	100	-	100	100	-	100	100	-	100	100	-	100	100	-
	1.6	100	100	-	100	100	-	100	100	-	100	100	-	100	100	-
	2.5	100	100	-	100	100	-	100	100	-	100	100	-	8	8	35
	4	100	100	-	100	100	-	100	100	-	100	100	-	8	8	40
	6	100	100	-	100	100	-	100	100	-	100	100	-	6	6	50
	8	100	100	-	100	100	-	50	38	80	50	38	63	6	6	63
	10	100	100	-	100	100	-	50	38	80	50	38	80	6	6	63
	13	100	100	-	100	100	-	50	38	80	42	32	80	6	6	63
	17	100	100	-	50	38	100	25	15	80	10	8	80	4	4	63
	22	100	100	-	50	38	125	25	15	100	10	8	80	4	4	63
	26	100	100	-	50	38	125	25	15	100	10	8	80	4	4	63
32	100	100	-	50	38	125	25	15	100	10	8	80	4	4	63	
40	100	100	-	40	30	160	15	11	125	8	6	160	3	3	80	
C4/63R	26	100	100	-	50	50	125	35	27	125	12	9	100	5	5	80
	32	100	100	-	50	50	125	35	27	125	10	8	100	5	5	80
	40	100	100	-	50	50	160	35	27	125	10	8	100	5	5	80
	50	100	100	-	50	50	160	35	27	125	10	8	100	5	5	80
	63	100	100	-	50	50	160	35	27	160	10	8	100	5	5	80
C4/100R	63	100	100	-	50	38	160	40	30	160	12	9	100	6	5	80
	75	100	100	-	50	38	160	40	30	160	8	6	125	5	4	100
	90	100	100	-	50	38	160	40	30	160	8	6	125	5	4	125
	100	100	100	-	50	38	160	40	30	160	8	6	125	5	4	125

No back-up fuse required

¹⁾ Back up fuse required if short-circuit current at installation point $I_{cc} > I_{cu}$

²⁾ 10% overvoltage

C4 Motor Circuit Breakers



Technical Data according to IEC/EN 60947-1, 60947-2, 60947-4-1 and VDE 0660

Technical Datasheet

Main Contacts			C4/32T	C4/32R	C4/63R	C4/100R
Type						
Number of Poles			3	3	3	3
Maximum ambient temperature	Storage / Transport	°C	-50 to +80			
	Operation	°C	-20 to +60			
	Storage / Transport	°F	-58 to +176			
	Operation	°F	-4 to +140			
Rated insulation voltage Ui	V	690*	690*	1000**	1000**	
Rated impulse withstand voltage Uimp	kV	6	6	8	8	
Rated operation voltage Ue	V	690	690	690	690	
Rated frequency	Hz	50/60	50/60	50/60	50/60	
Utilisation category	IEC 60947-2 (circuit breaker)		A	A	A	A
	IEC 60947-4-1 (motor starter)		AC3	AC3	AC3	AC3
Class	acc. to IEC 60947-4-1		10	10	10	10
Power loss Pv per circuit-breaker dependent on rated current In (upper setting range)	In -> 0,16 up to 1,6 A	W	4.4	4.4	-	-
	In -> 2,5 up to 26 A	W	7.4	7.4	-	-
	In -> 32 A	W	4	4	-	-
R per conducting path = $P/I^2 \times 3$	In -> 26 up to 63 A	W	-	-	9.7	-
	In -> up to 63 A	W	-	-	-	21.8
	In -> 75 up to 100 A	W	-	-	-	17.8
Shock resistance	acc. to IEC 60068 Part 2-27	g	25	25	25	25
Degree of protection	acc. to IEC 60529		IP20	IP20	IP20	IP20
Shock hazard protection	acc. to DIN VDE 0106 Part 100		safe against finger touch	safe against finger touch	safe against finger touch	safe against finger touch
Temperature compensation	acc. to IEC 60947-4-1	°C	-20 to +60	-20 to +60	-20 to +60	-20 to +60
Mechanical endurance	operating cycles		10×10^4	10×10^4	5×10^4	5×10^4
Electrical endurance			10×10^4	10×10^4	2.5×10^4	2.5×10^4
Max. operating frequency per hour (motor starts)	1/h		25	25	25	25
Conductor cross-sections	Terminal type, screw type		Pz2	Pz2	Pz2	"4mm hexagon socket screw"
	Tightening screw	Nm	0.8 - 2.5	0.8 - 2.5	3 - 4.5	4 - 6
		lb-in	7 - 22	7 - 22	26 - 39	35 - 53
	Conductor cross section solid cable	mm ²	1 x (1 - 10), 2 x (1 - 6)	1 x (1 - 10), 2 x (1 - 6)	1 x (0,75 - 35), 2 x (0,75 - 25)	1 x (2,5 - 70), 2 x (2,5 - 50)
		AWG	1 x (18 - 8), 2 x (18 - 10)	1 x (18 - 8), 2 x (18 - 10)	1 x (18 - 2), 2 x (18 - 4)	1 x (12 - 2/0), 2 x (12 - 1/0)
	Conductor cross section stranded cable	mm ²	1 x (1 - 6), 2 x (1 - 6)	1 x (1 - 6), 2 x (1 - 6)	1 x (0,75 - 35), 2 x (0,75 - 25)	1 x (2,5 - 70), 2 x (2,5 - 50)
		AWG	1 x (18 - 10), 2 x (18 - 10)	1 x (18 - 10), 2 x (18 - 10)	1 x (18 - 2), 2 x (18 - 4)	1 x (12 - 2/0), 2 x (12 - 1/0)
Conductor cross section flexible cable	mm ²	1 x (1 - 6), 2 x (0,75 - 4)	1 x (1 - 6), 2 x (0,75 - 4)	1 x (0,75 - 25), 2 x (0,75 - 16)	1 x (2,5 - 50), 2 x (2,5 - 35)	
AWG	1 x (18 - 10), 2 x (18 - 10)	1 x (18 - 10), 2 x (18 - 10)	1 x (18 - 4), 2 x (18 - 6)	1 x (12 - 1/0), 2 x (10 - 2/0)		

*) Suitable at 690V for: earthed-neutral systems, overvoltage category I to IV, pollution degree 3 (standard-industry): Uimp = 6kV.
 **) Suitable at 1000V for: earthed-neutral systems, overvoltage category I to IV, pollution degree 3 (standard-industry): Uimp = 8kV.

Permissible ratings of devices approved for North America

Circuit breakers C4 as „Combination Motor Controller Type E“ and “Suitable for Group Installation” 60947-2, 60947-4-1 and VDE 0660

According to UL 508 demands a line-side 1 inch air and 2 inch creepage distance for „Combination Motor Controller Type E“ is necessary. Therefore circuit-breaker C4-32R is approved to UL 508 in combination with the Terminal block C4 32R E. Circuit-breakers C4-100 are approved to UL 508 in combination with the insulation barriers C4 100 E. According to CSA these terminal blocks can be omitted when the device is used as „Combination Motor Controller Type E“.

Type	Rated Operation Current	Max. short-circuit current			Motor load 1-phase		Motor Load 3-phase				Max. rated fuse	Max. breaker size
		240V kA	480V kA	600V kA	115V hp	230V hp	200V hp	230V hp	460V hp	600V hp		
C4/32R (+ C4 32RE)	0.16 ... 0.63	100	65	25	-	-	-	-	-	-	500	500
	1	100	65	25	-	-	-	-	-	1/2	500	500
	1.6	100	65	25	-	1/10	-	-	3/4	3/4	500	500
	2.5	100	65	25	-	1/6	1/2	1/2	1	1 1/2	500	500
	4	100	65	25	1/8	1/3	3/4	3/4	2	3	500	500
	6	100	65	25	1/4	1/2	1	1 1/2	3	5	500	500
	8	100	65	25	1/3	1	2	2	5	5	500	500
	10	100	65	25	1/2	1 1/2	2	3	5	7 1/2	500	500
	13	100	65	25	1/2	2	3	3	7 1/2	10	500	500
	17	100	30	10	1	3	3	5	10	15	500	500
	22	100	30	10	1 1/2	3	5	7 1/2	15	20	500	500
	26	100	30	10	2	5	7 1/2	7 1/2	15	20	500	500
	32	100	30	10	2	5	7 1/2	10	20	30	500	500
	C4/63R	100	30	10	3	7 1/2	10	10	30	30	500	500
26		100	50	10	2	3	7 1/2	7 1/2	15	20	600	600
32		100	50	10	2	5	7 1/2	10	20	30	600	600
C4-100R	40	100	50	10	3	7 1/2	10	10	30	30	600	600
	50	100	50	10	5	10	15	15	30	40	600	600
	63	100	50	10	5	10	20	20	40	60	600	600
	63	100	40	10	5	10	20	20	40	60	1000	1000
(+ C4 100 E)	75	100	40	10	5	15	20	25	50	60	1000	1000
	90	100	40	10	7 1/2	20	25	30	60	75	1000	1000
	100	100	40	10	10	20	30	30	75	100	1000	1000

C4 Motor Circuit Breakers



Permissible ratings of devices approved for North America Circuit breakers C4 as “Manual Motor Starter”

Technical Datasheet

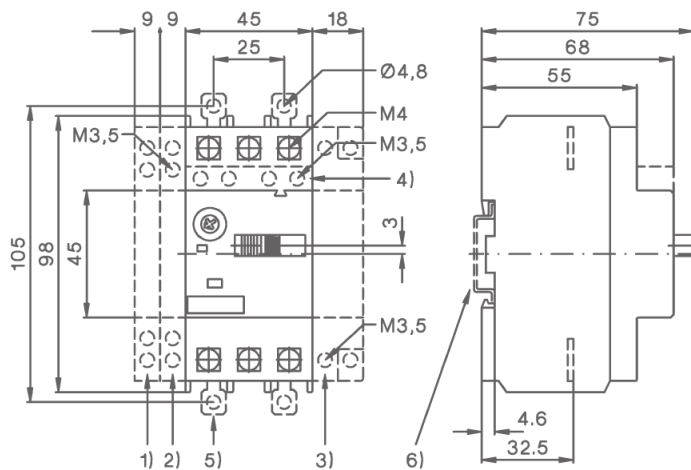
If used as “Manual Motor Starter” the circuit breaker is always operated in combination with a short circuit device. For use with approved fuses or circuit breakers according to UL489 or CSA22.2 No. 5 only.

The sizes are selected according to National Electrical Code (UL), or Canadian Electrical Code (CSA).

Type	Rated Operation Current Ie A	Max. short-circuit current			Motor load 1-phase		Motor Load 3-phase				Max. rated fuse A	Max. breaker size A
		240V kA	480V kA	600V kA	115V hp	230V hp	200V hp	230V hp	460V hp	600V hp		
C4/32T	0.16 ... 0.63	100	50	10	-	-	-	-	-	-	1	15
	1	100	50	10	-	-	-	-	-	1/2	3	15
	1.6	100	50	10	-	1/10	-	-	3/4	3/4	6	15
	2.5	100	50	10	-	1/6	1/2	1/2	1	1 1/2	10	15
	4	100	50	5	1/8	1/3	3/4	3/4	2	3	15	15
	6	100	25	5	1/4	1/2	1	1 1/2	3	5	20	20
	8	100	25	5	1/3	1	2	2	5	5	30	30
	10	50	10	5	1/2	1 1/2	2	3	5	7 1/2	40	40
	13	50	10	5	1/2	2	3	3	7 1/2	10	50	50
	17	40	10	5	1	3	3	5	10	15	60	60
	22	30	10	5	1 1/2	3	5	7 1/2	15	20	80	80
	26	30	7.5	5	2	3	7 1/2	7 1/2	15	20	100	100
	32	20	7.5	5	2	5	7 1/2	10	20	30	125	125
	40	20	7.5	5	3	7 1/2	10	10	30	30	150	150
C4/32R	0.16 ... 0.63	100	50	10	-	-	-	-	-	-	1	15
	4	100	50	10	1/8	1/3	3/4	3/4	2	3	15	15
	6	100	50	10	1/4	1/2	1	1 1/2	3	5	20	20
	8	100	50	10	1/3	1	2	2	5	5	30	30
	10	100	50	10	1/2	1 1/2	2	3	5	7 1/2	40	40
	13	100	50	10	1/2	2	3	3	7 1/2	10	50	50
	17	100	30	10	1	3	3	5	10	15	60	60
	22	100	30	10	1 1/2	3	5	7 1/2	15	20	80	80
	26	100	30	10	2	3	7 1/2	7 1/2	15	20	100	100
	32	100	30	10	2	5	7 1/2	10	20	30	125	125
C4/63R	40	100	30	10	3	7 1/2	10	10	30	30	150	150
	26	100	50	10	2	3	7 1/2	7 1/2	15	20	100	100
	32	100	50	10	2	5	7 1/2	10	20	30	125	125
	40	100	50	10	3	7 1/2	10	10	30	30	150	150
	50	100	50	10	5	10	15	15	30	40	200	200
C4/100R	63	100	50	10	5	10	20	20	40	60	250	250
	63	100	25	10	5	10	20	20	40	60	250	250
	75	100	25	10	5	15	20	25	50	60	300	300
	90	100	25	10	7 1/2	20	25	30	60	75	350	350
	100	100	25	10	10	20	30	30	75	100	400	400

Dimensions (mm)

C4/32T



Height of arcing spaces (clearance from earthed parts)					
at Ue (V)	240	415	460	525	690
mm	20	20	20	20	20
inch	0.8	0.8	0.8	0.8	0.8

- 1) Side aux. contact
- 2) Magnetic trip alarm
- 3) Shunt or undervoltage release
- 4) Transverse aux. contact
- 5) Push-in lugs for screw mounting
- 6) 35mm DIN rail acc. to EN 50022

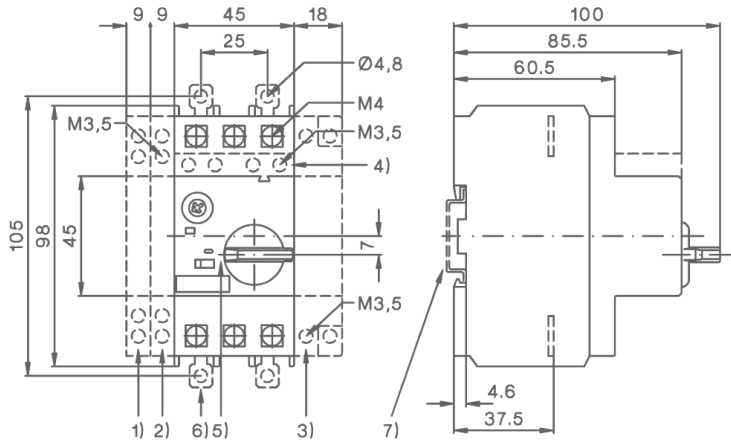
C4 Motor Circuit Breakers



Dimensions (mm) continued

Technical Datasheet

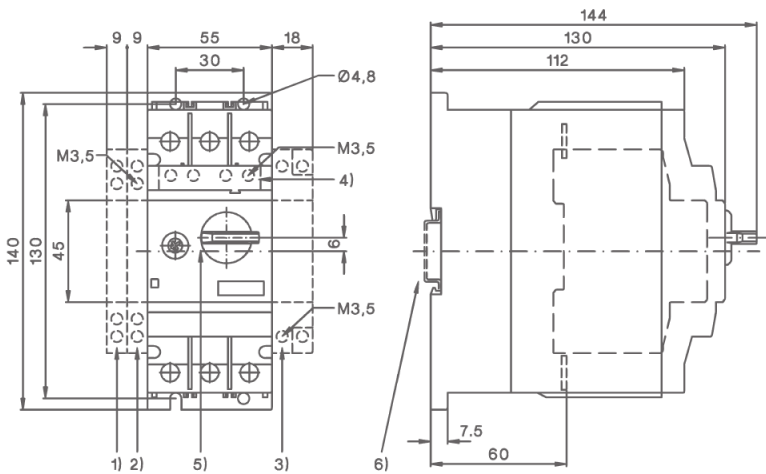
C4/32R



Height of arcing spaces (clearance from earthed parts)					
at Ue (V)	240	415	460	525	690
mm	30	30	30	30	50
inch	1.18	1.18	1.18	1.18	2.0

- 1) Side aux. contact
- 2) Magnetic trip alarm
- 3) Shunt or undervoltage release
- 4) Transverse aux. contact
- 5) Handle lock in OFF-position (Ø 5mm)
- 6) Push-in lugs for screw mounting
- 7) 35mm DIN rail acc. to EN 50022

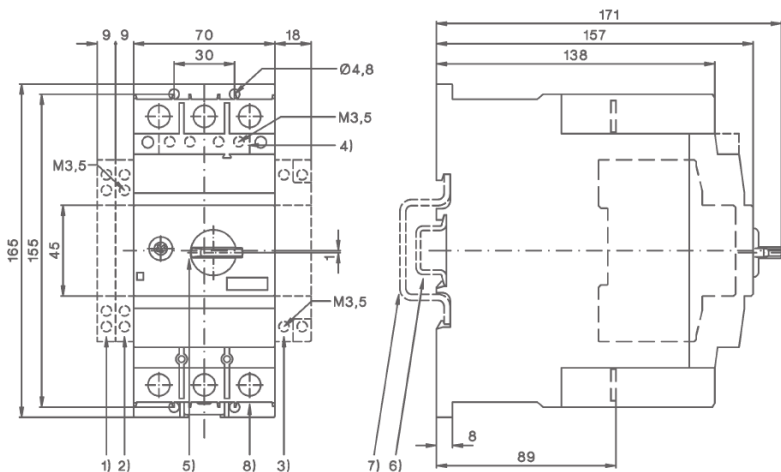
C4/63R



Height of arcing spaces (clearance from earthed parts)					
at Ue (V)	240	415	460	525	690
mm	50	50	50	50	50
inch	2.0	2.0	2.0	2.0	2.0

- 1) Side aux. contact
- 2) Magnetic trip alarm
- 3) Shunt or undervoltage release
- 4) Transverse aux. contact
- 5) Handle lock in OFF-position (Ø 5mm)
- 6) 35mm DIN rail acc. to EN 50022

C4/100R



Height of arcing spaces (clearance from earthed parts)					
at Ue (V)	240	415	460	525	690
mm	50	70	70	110	150
inch	2.0	2.75	2.75	4.33	6.0

- 1) Side aux. contact
- 2) Magnetic trip alarm
- 3) Shunt or undervoltage release
- 4) Transverse aux. contact
- 5) Handle lock in OFF-position (Ø 5mm)
- 6) 35mm DIN rail acc. to EN 50022
- 7) 70mm DIN rail acc. to EN 50023
- 8) 4mm hexagon socket screw

C4 Motor Circuit Breakers

Accessories

Top mounted auxiliary contact block, max 1 per circuit breaker

Part Number	Contacts		Rated Operational Current		
	NO	NC	AC15 24V A	AC15 240V A	AC1 240V A
C4HQ11	1	1	3	2	5
C4HQ20	2	-	3	2	5
C4HQ02	-	2	3	2	5



Auxiliary contact block for left hand side mounting, up to 2 per circuit breaker

Part Number	Contacts		Rated Operational Current		
	NO	NC	AC15 24V A	AC15 240V A	AC1 240V A
C4HS11	1	1	6	4	10
C4HS20	2	-	6	4	10
C4HS02	-	2	6	4	10



Trip alarm switch for left hand side mounting, max 1 per circuit breaker

Part Number	Contacts		Rated Operational Current		
	NO	NC	AC15 24V A	AC15 240V A	AC1 240V A
C4MA11	1	1	6	4	10
C4MA11-63	1	1	6	4	10

for C4/32T and C4/32R
for C4/63R and C4/100R



Short circuit trip alarm switch for left hand side mounting, max 1 per circuit breaker

Part Number	Contacts		Rated Operational Current		
	NO	NC	AC15 24V A	AC15 240V A	AC1 240V A
C4M11	1	1	6	4	10



Undervoltage releases for right hand side mounting, max 1 per circuit breaker

Part Number	Description	Version
C4U24	Under voltage trip: trips the circuit breaker when the voltage is interrupted.	24V 50Hz, 28V 60Hz
C4U110		110-127V 50Hz, 120V 60Hz
C4U230		220-230V 50Hz, 240-260V 60Hz
C4U240		240V 50Hz, 277V 60Hz
C4U400	Prevents accidental restart.	380-400V 50Hz, 440-460V 60Hz
C4U415		415-440V 50Hz, 460-480V 60Hz



Shunt releases for right hand side mounting, max 1 per circuit breaker

Part Number	Description	Version	
C4A24	Shunt trip: trips the circuit breaker when the release coil is energised	20-24V 50Hz, 28V 60Hz	20-70V 50/60Hz DC
C4A110		75-127V 50Hz, 120V 60Hz	75-190V 50/60Hz DC
C4A230		190-230V 50Hz, 240-260V 60Hz	190-330V 50/60Hz DC
C4A240		200-240V 50Hz, 277V 60Hz	200-330V 50/60Hz DC
C4A400	100% ON max. 5sec. ON	300-400V 50Hz, 440-460V 60Hz	300-500V 50/60Hz DC
C4A415		330-440V 50Hz, 460-480V 60Hz	330-500V 50/60Hz DC



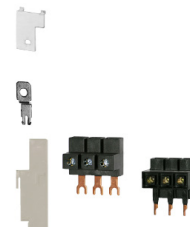
Enclosure for C4/32R

Part Number	Description
C432RPFH4	Enclosure for wall mounting, lockable, with N- and PE- terminal, black and grey space for 1 transverse and side aux. contact + release
C432RPFHN4	Enclosure for wall mounting, lockable, with N- and PE- terminal, red and yellow space for 1 transverse and side aux. contact + release



Accessories & Busbars

Part Number	Description	Version
C4K	Scale cover, sealable	C4/32...100
C432L	Push-in lugs for screwing the circuit-breaker onto mounting plates. 2 units required (1 bag with 10 units)	C4/32
C432RE	Spade terminal block, up to 600V acc. To UL489	C4/32-R
C432REV	Pin terminal block, up to 600V acc. To UL489	C4/32-R
C4100E	*Insulation barriers, up to 600V acc. To UL489 for increased distances and clearances acc. to UL Type "E", 2 pcs per device (on input side)	C4/100



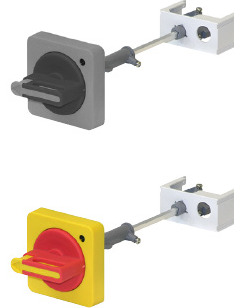
C4 Motor Circuit Breakers

Accessories

Door Coupling Rotary Mechanism IP65

The door locking device prevents accidental opening of the cubicle door in the ON position of the circuit breaker. The OFF position can be locked with up to 3 padlocks

Part Number	Description	For Use With
C4/32R-EH1-115	Extension shaft 115mm, Black Handle	C4/32R
C4/32R-EH1-315	Extension shaft 315mm, Black Handle	C4/32R
C4/63R-EH1-115	Extension shaft 115mm, Black Handle	C4/63R
C4/63R-EH1-315	Extension shaft 315mm, Black Handle	C4/63R
C4/100R-EH1-115	Extension shaft 115mm, Black Handle	C4/100R
C4/100R-EH1-315	Extension shaft 315mm, Black Handle	C4/100R
C4/32R-EHN1-115	Extension shaft 115mm, Emergency stop (Red/Yellow Handle)	C4/32R
C4/32R-EHN1-315	Extension shaft 315mm, Emergency stop (Red/Yellow Handle)	C4/32R
C4/63R-EHN1-115	Extension shaft 115mm, Emergency stop (Red/Yellow Handle)	C4/63R
C4/63R-EHN1-315	Extension shaft 315mm, Emergency stop (Red/Yellow Handle)	C4/63R
C4/100R-EHN1-115	Extension shaft 115mm, Emergency stop (Red/Yellow Handle)	C4/100R
C4/100R-EHN1-315	Extension shaft 315mm, Emergency stop (Red/Yellow Handle)	C4/100R



Insulated 3-phase Busbars

For feeding several modular circuit-breakers. On standard mounting rails, insulated. Rated operational voltage max. 690 V, rated current 63 A, with spade or pin connection, modular spacing 45mm (54mm on request)

Part Number	Description	Description	Version	For Use With	IP Rating
C432S2	3-phase busbars	Spade	for 2 circuit breakers	C4/32	IP20
C432S3	3-phase busbars		for 3 circuit breakers	C4/32	IP10
C432S4	3-phase busbars		for 4 circuit breakers	C4/32	IP10
C432S5	3-phase busbars		for 5 circuit breakers	C4/32	IP10
C432SE	Line side terminal, 3 pole, connection from above		Conductor cross-section solid or stranded 6 - 25 mm ² with end sleeve 4 - 16 mm ²	C4/32	IP10
C432SF	Cover for tags	Touch guard for empty spaces	C4/32		
C432S2V	3-phase busbars	Pin	for 2 circuit breakers	C4/32	IP20
C432S3V	3-phase busbars		for 3 circuit breakers	C4/32	IP20
C432S4V	3-phase busbars		for 4 circuit breakers	C4/32	IP20
C432S5V	3-phase busbars		for 5 circuit breakers	C4/32	IP20
C432SEV	Line side terminal, 3 pole, connection from above		Conductor cross-section solid or stranded 6 - 25 mm ² with end sleeve 4 - 16 mm ²	C4/32	IP20
C432SFV	Cover for tags	Touch guard for empty spaces	C4/32		
C463S2	3-phase busbars, 690V, 108A, modular spacing 55mm		for 2 circuit breakers	C4/63	IP20



DIN Rail Adapters for Contactor

Part Number	Description	For Use With
C432HU1	DIN-rails moveable for easy mounting and replacing. It can be connected on one 35 mm DIN-rail (high 15mm) or two 35 mm-DIN-rails (125mm distance)	C4/32, MC(D)10N to MC(D)40
C463HU1	Adapter, it can be connected on two 35 mm DIN-rails (125mm distance) or one 75 mm DIN-rail, or screw mounting	C4/63, MC(D)24 to MC74
C4100HU1	Adapter, it can be connected on two 35 mm DIN-rails (125mm distance) or one 75 mm DIN-rail, or screw mounting	C4/100, MC50 to MC74



Busbar adapters for 60-mm-system, 3 copper busbars acc. to DIN 46433

Part Number	Description	For Use With
C432SA60	up to 25A, 690V 45mm width, 182mm height bar width: 12 end 15mm bar thickness: 5 and 10 mm	C4/32

Link modules, for mechanical and electrical connection between circuit-breaker and contactor

Part Number	Description	For Use With
C432VK1	max. 32A	C4/32, MB
C432VK3	max. 32A	C4/32, MC10N to MC22N
C432VKG3	max. 32A	C4/32, MCD10 to MCD22



Link modules, for electrical connection between circuit-breaker and contactor

Part Number	Description	For Use With
C432VD	max. 32A	C4/32, MC24 to MC40 and MCD24 to MCD40
C463VD	max. 63A	C4/63R, MC24 to MC74
C463VDG	max. 63A	C4/63R, MCD24 to MCD40
C4100VD	max. 100A	C4/100R, MC50 to MC74

C4 Motor Circuit Breakers



Technical Data for Auxiliary Switches

Technical Datasheet

Type			C4HQ		C4HS	C4M	
Rated operational voltage	Ue AC	V	24	240	-	24	240
	Ue DC L/R 200 ms	V	24	220	-	24	220
Rated operational current	Ie/AC-15	A	3	3	-	6	4
	Ie/AC-12 lth	A	5	5	-	10	10
	Ie/DC-13	A	1	0.1	-	2	0.25

Type			C4U (undervoltage)		C4A (shunt)	
Power consumption	pick-up	VA/W	8.5/6		8.5/6	
	uninterrupted duty	V	3/1.2		3/1.2	
Response voltage	trip	V	0,7 - 0,35xUs		-	
	pick-up	V	0,85 - 1,1xUs		-	
	acc. To IEC 60947-1	V	-		0,7 - 1,1xUs	

Ratings of auxiliary switches and alarm switches

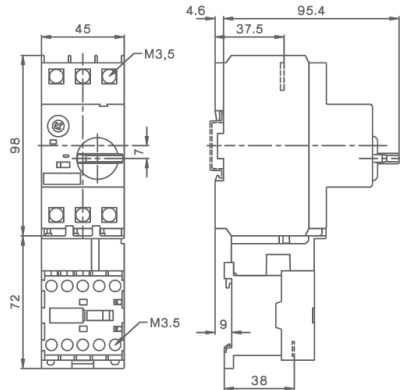
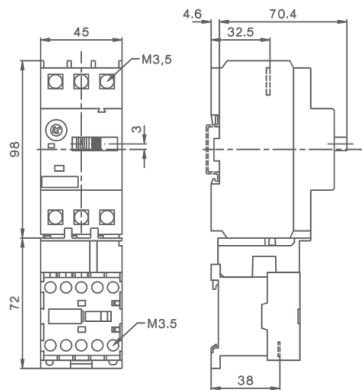
Type		C4HS & C4M	C4HQ
Breaking Capacity	AC	A600	A300
	DC	Q300	R300
Rated operational voltage	max. VAC	600	240
Rated operational current	A	10	5

Accessories Dimensions (mm)

Link Module C432VK1

C4/32T + MB

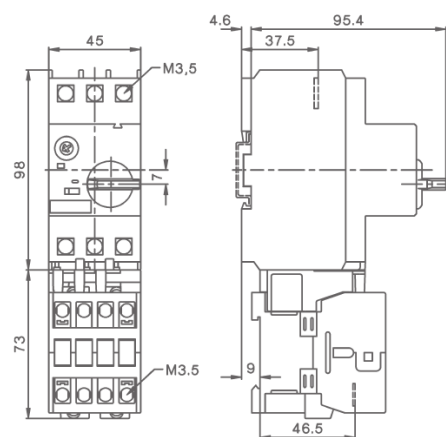
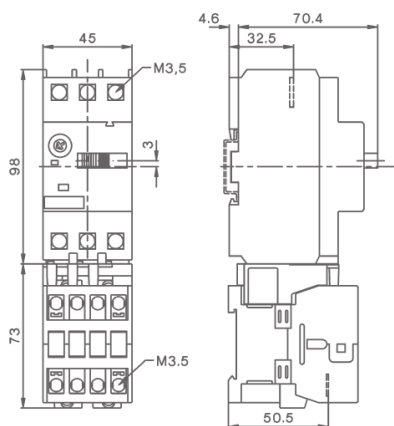
C4/32R + MB



Link Module C432VK3

C4/32T + MC10N
C4/32T + MC14N
C4/32T + MC18N
C4/32T + MC22N

C4/32R + MC10N
C4/32R + MC14N
C4/32R + MC18N
C4/32R + MC22N



C4 Motor Circuit Breakers



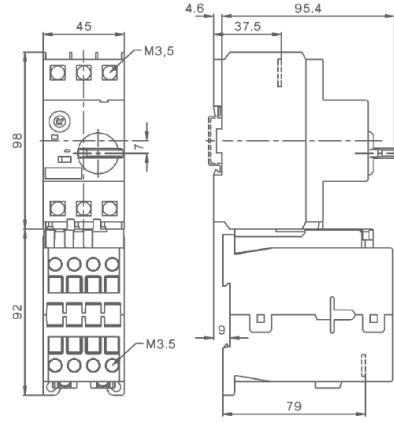
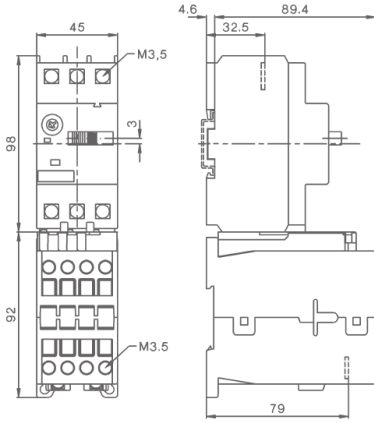
Technical Datasheet

Accessories Dimensions (mm) continued

Link Module C432VKG3

C4/32T + MCD10N
 C4/32T + MCD14N
 C4/32T + MCD18N
 C4/32T + MCD22N

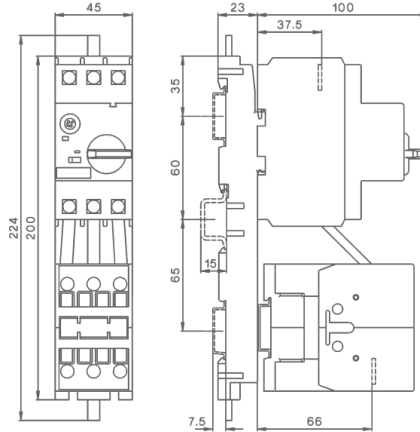
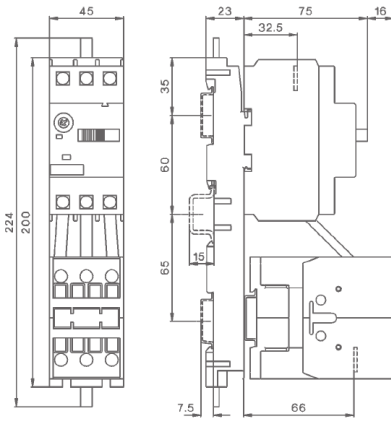
C4/32R + MCD10N
 C4/32R + MCD14N
 C4/32R + MCD18N
 C4/32R + MCD22N



DIN Rail Adaptor C432HU1

C4/32T + MC24 + C432VD
 C4/32T + MC32 + C432VD

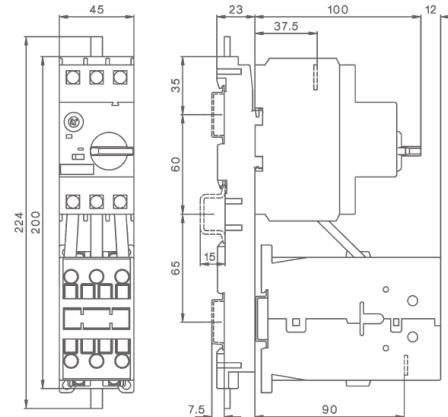
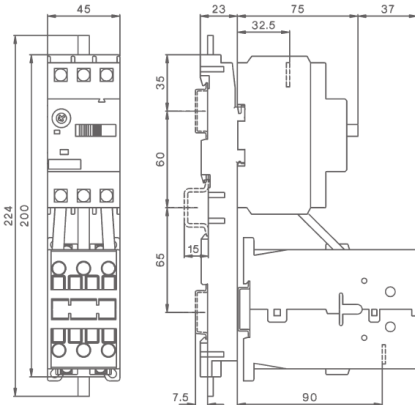
C4/32R + MC24 + C432VD
 C4/32R + MC32 + C432VD



DIN Rail Adaptor C432HU1

C4/32T + MCD24 + C432VD
 C4/32T + MCD32 + C432VD

C4/32R + MCD24 + C432VD
 C4/32R + MCD32 + C432VD



C4 Motor Circuit Breakers



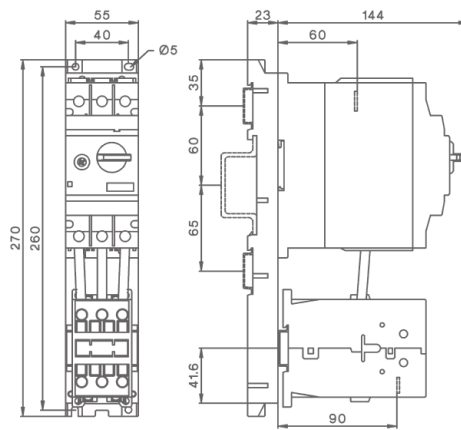
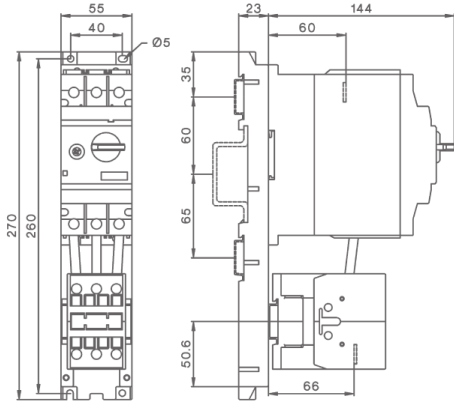
Technical Datasheet

Accessories Dimensions (mm) continued

DIN Rail Adaptor C463HU1

C4/63T + MC32 + C463VD
C4/63T + MC40 + C463VD

C4/63T + MCD32 + C463VDG
C4/63T + MCD40 + C463VDG

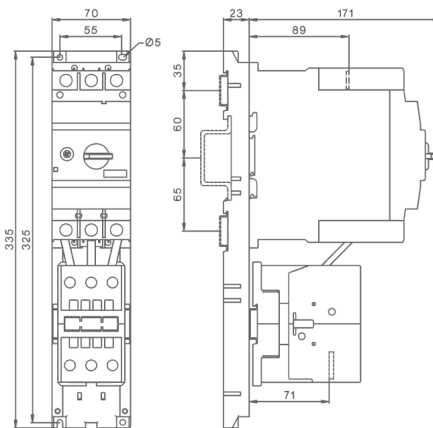
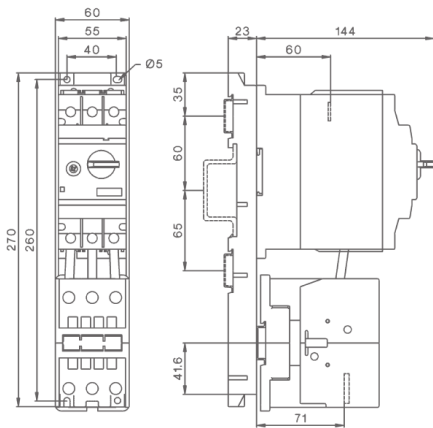


DIN Rail Adaptor C463HU1

C4/63T + MC50 + C463VD
C4/63T + MC62 + C463VD

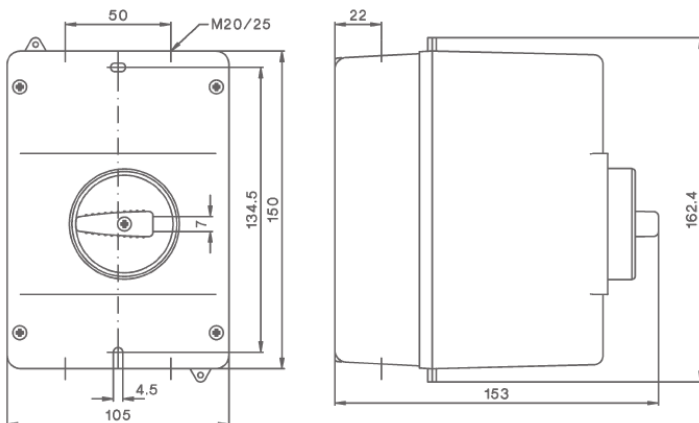
DIN Rail Adaptor C463HU1

C4/100R + MC62 + C4100VD
C4/100R + MC74 + C4100VD



Enclosures

C432RPFH4
C432RPFHN4



C4 Motor Circuit Breakers

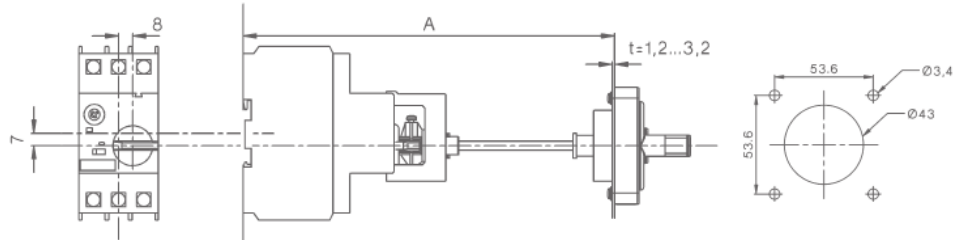


Accessories Dimensions (mm) continued

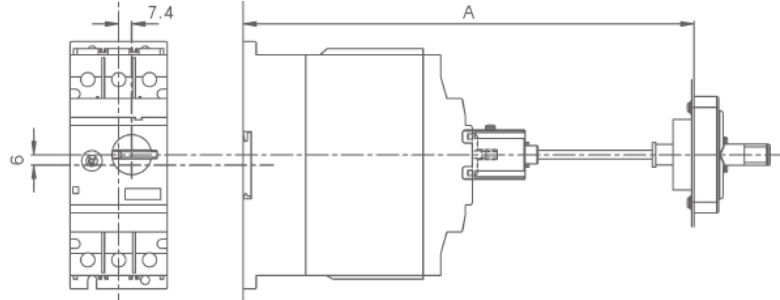
Technical Datasheet

Door-Coupling Rotary Mechanism

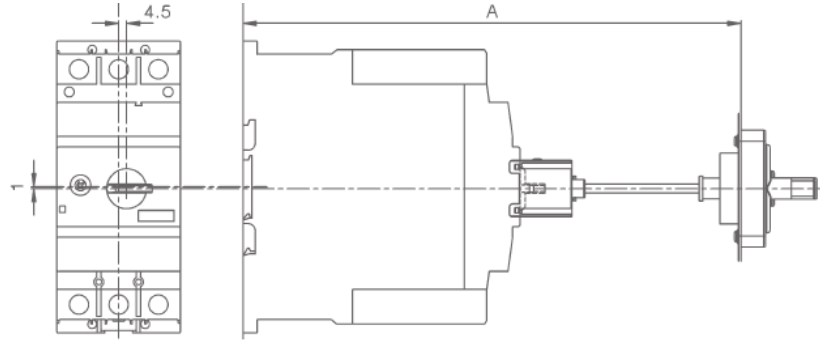
Part Number	A
C4/32R-EH1-115	149-210
C4/32R-EHN1-115	149-210
C4/32R-EH1-315	149-410
C4/32R-EHN1-315	149-410



Part Number	A
C4/63R-EH1-115	194-255
C4/63R-EHN1-115	194-255
C4/63R-EH1-315	194-455
C4/63R-EHN1-315	194-455



Part Number	A
C4/100R-EH1-115	220-282
C4/100R-EHN1-115	220-282
C4/100R-EH1-315	220-482
C4/100R-EHN1-315	220-482



Insulated 3-Phase Busbar

C432S
C432SE

